

A CLEANER PORT.  
A BRIGHTER  
FUTURE.



# 2009 Emissions Inventory Summary

**Christopher Patton**

Acting Director, Environmental Management  
Port of Los Angeles

---

AIR





# 2009 Emissions Inventory Highlights

- New production protocol for Emissions Inventories
- Significant year-to-year reductions normalized for lower growth
- Significant Diesel Particulate Matter (DPM) reductions
- Reduced SoCAB contribution
- CAAP Progress reporting (2005-2009) to track achievement of Bay-wide Standards

**WE'RE GETTING IT DONE!**



# 2009 Emissions Inventory

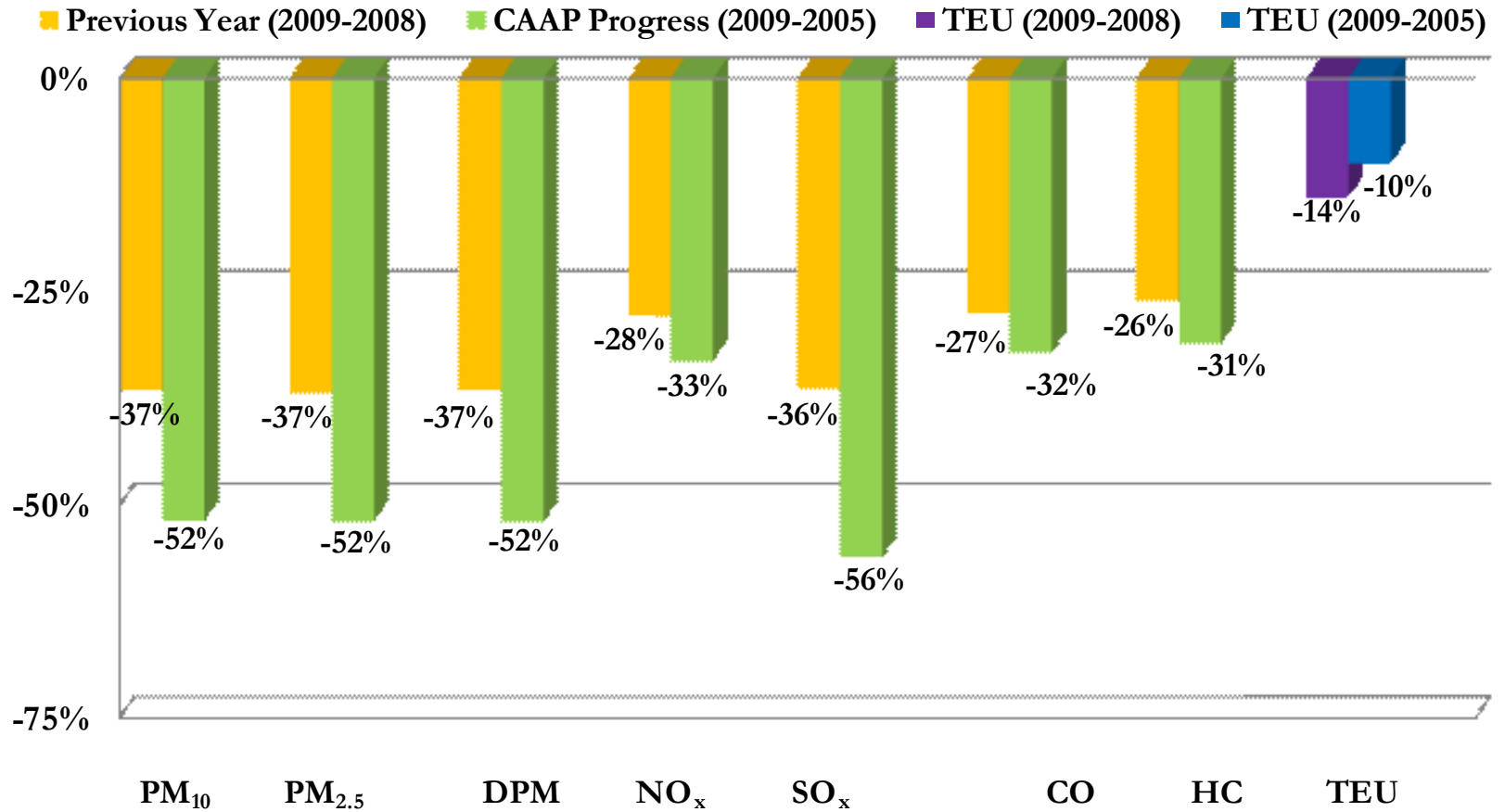
## Important Contributions to 2009 Reductions

- Lower Cargo Throughput
  - ✓ -14% Compared to 2008
- Clean Truck Program
- Ocean-Going Vessels
  - ✓ Vessel Speed Reduction
  - ✓ Port's Clean Fuel Incentive Program (1<sup>st</sup> half of 2009)
  - ✓ CARB's Clean Fuel Regulation (2<sup>nd</sup> half of 2009)
- Improvements in Locomotive Fleet Composition
- Cleaner Cargo Handling Equipment



# 2009 Emissions Inventory

## Total Emissions Change



AIR

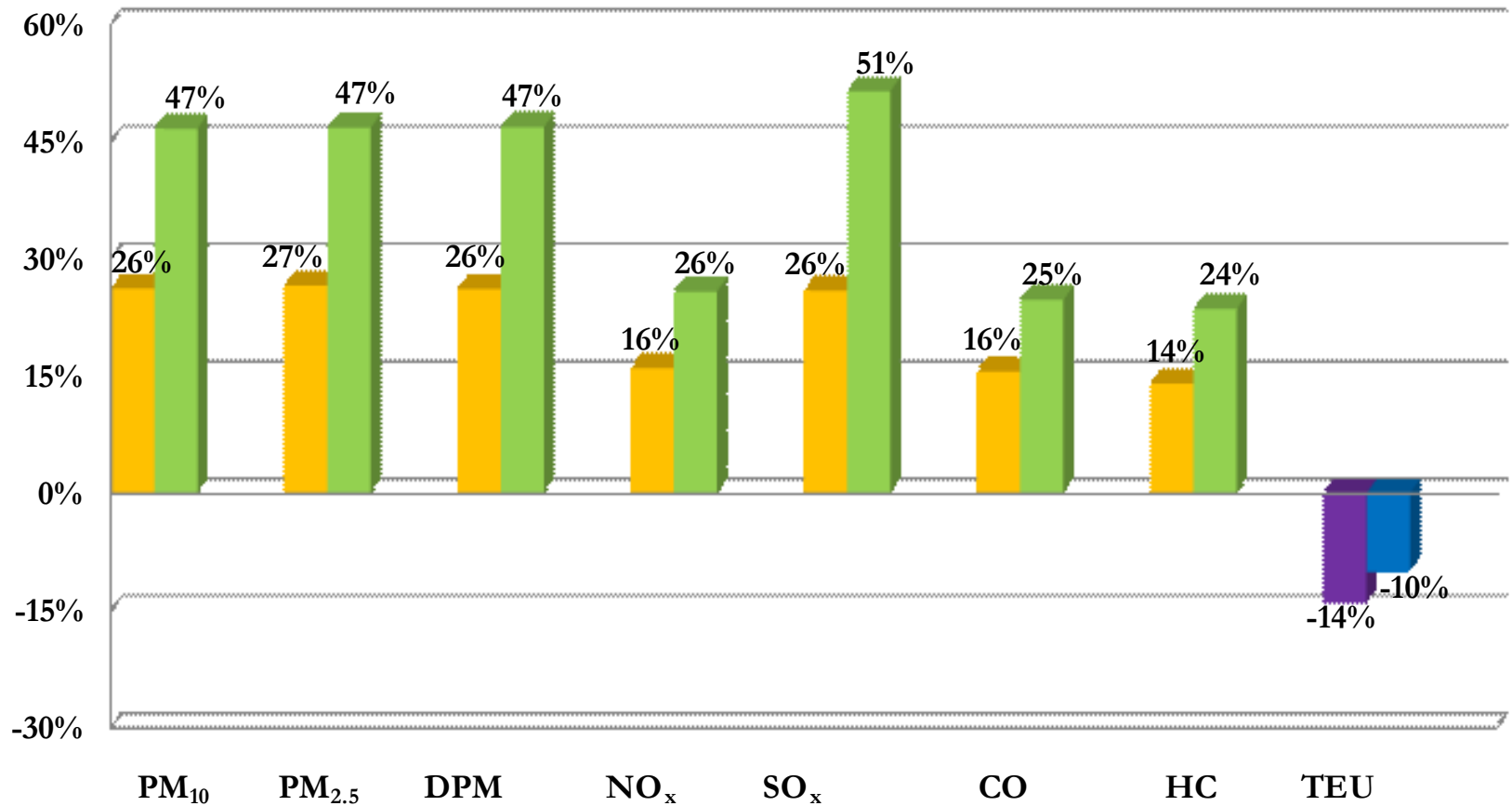
# CAAP Progress Tracking

## Emission Efficiency per TEU

(Positive means efficiency increase)



■ Previous Year (2009-2008) ■ CAAP Progress (2009-2005) ■ TEU (2009-2008) ■ TEU (2009-2005)



AIR



# 2009 Emissions Inventory

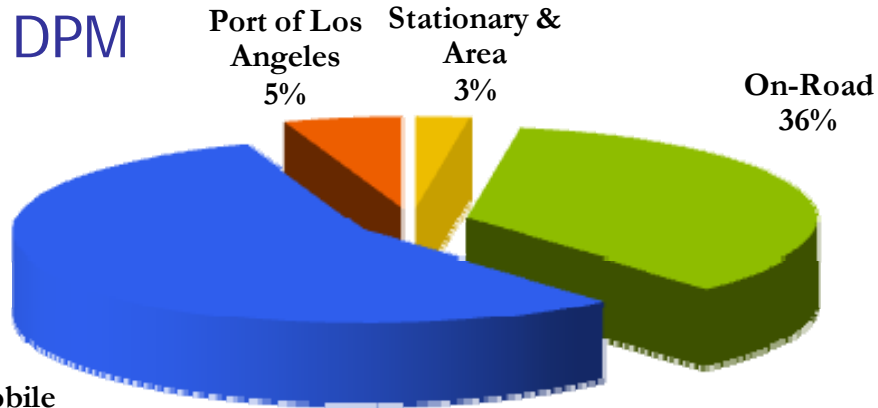
## GHG Comparison

---

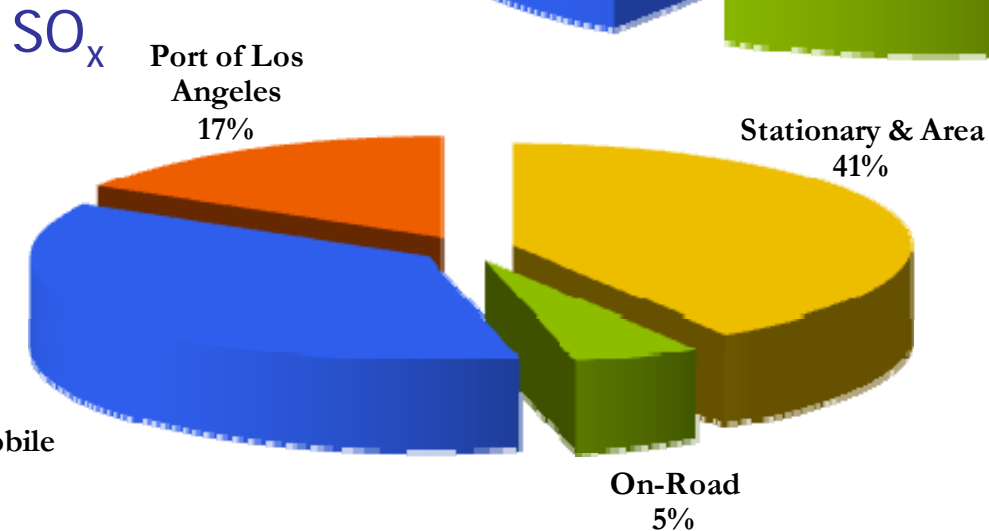
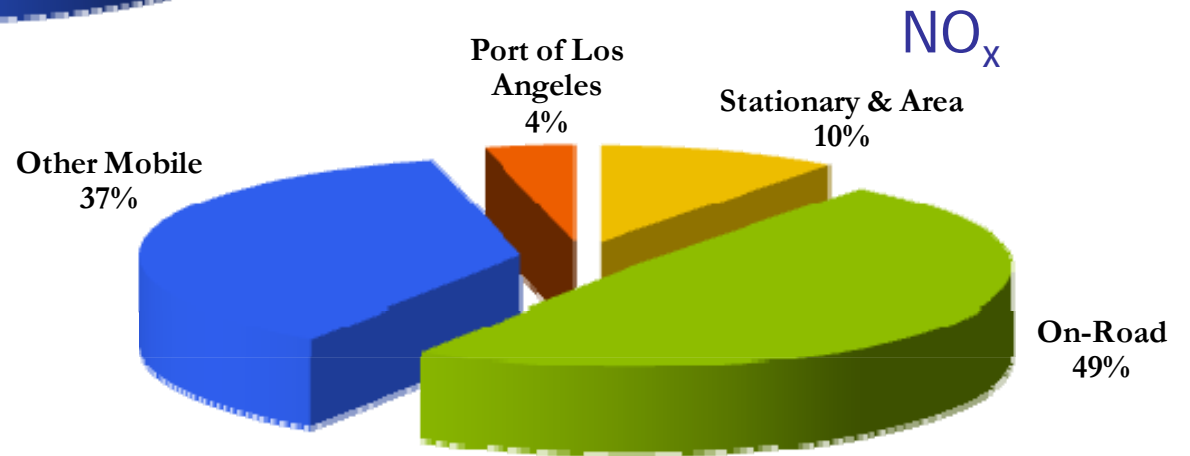
<b>Year</b>	<b>CO<sub>2</sub> Equivalent</b>
2009	910,647
2008	1,047,251
2007	1,127,501
2006	1,276,634
2005	1,086,574
<b>2009-2008</b>	<b>-13%</b>
<b>2009-2005</b>	<b>-16%</b>

# 2009 Emissions Inventory

## Our Contribution to the Basin



Other Mobile  
56%



Other Mobile  
37%

On-Road  
5%



# Coming Up!

- 2010 EI – Important Sources of Reductions
  - Full Implementation of 2<sup>nd</sup> CTP Ban
  - Vessel Speed Reduction to 40 nm
  - Progressive Implementation of AMP
  - CARB's Ocean-going Vessel Clean Fuel and Harbor Craft Regulations
  - On-going CHE Modernization
  - Green Leases

